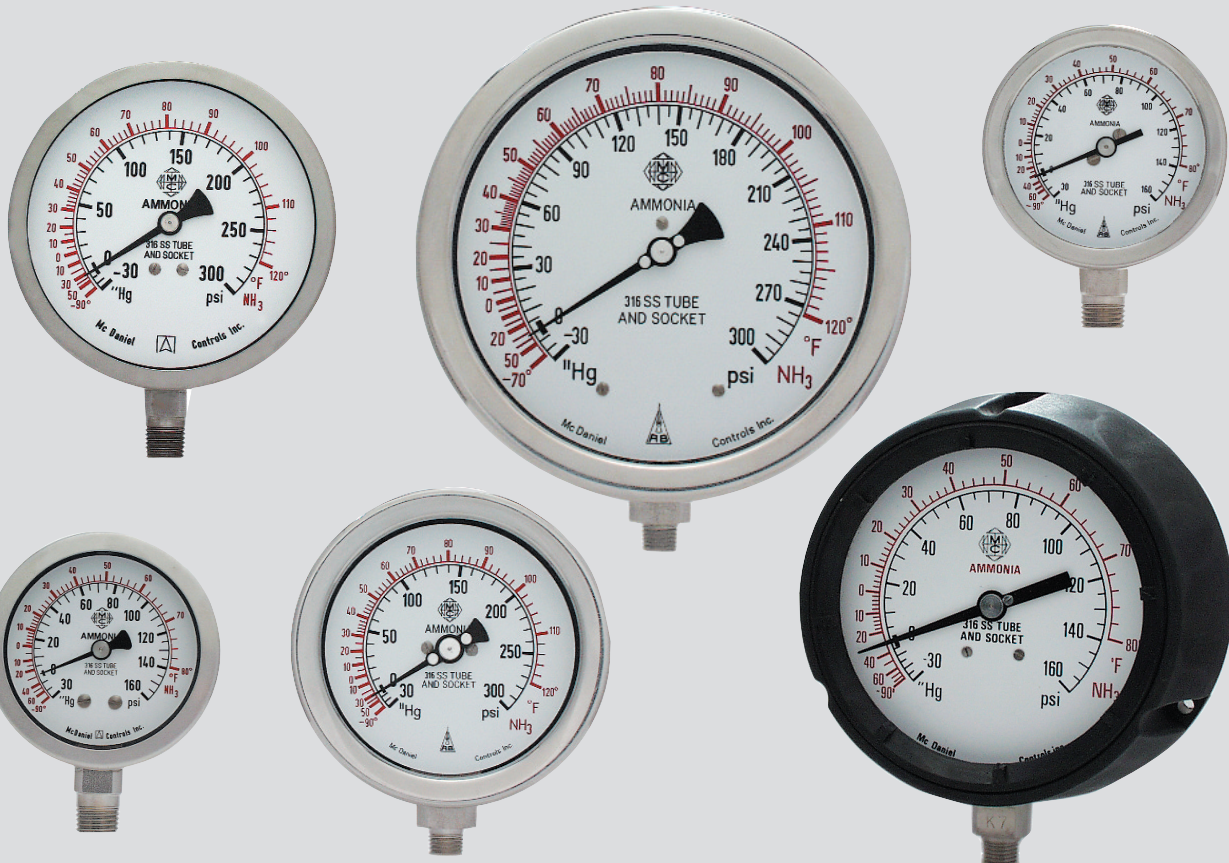




# McDANIEL

## Ammonia Gauges

Safe • Accurate • Reliable • Durable • Guaranteed



### "When Durability Matters"™

McDaniel designs and manufactures its industrial and commercial ammonia refrigeration gauges to minimize failure and to protect personnel and property.

A laminated safety glass lens is standard on all ammonia gauges (optional on models K9, E9, or G9). The use of a laminated safety glass lens, rather than plastic, provides additional safety, and will not scratch, craze, or discolor.


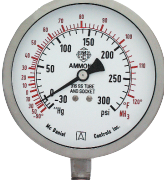


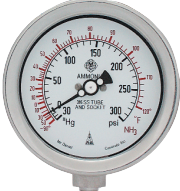

We offer ammonia gauges in dial sizes 2½ inch (63mm), 4 inch (100mm), 4½ inch (130mm), and 6 inch (160mm) in all case configurations.

For all of your demanding applications where durability, accuracy, and safety are required, choose McDaniel.

## McDaniel Controls, Inc.

P. O. Box 187, Luling, LA 70070 • 14148 Highway 90, Boutte, LA 70039 U.S.A.  
(985) 758-2782 • New Orleans (504) 467-1333 • Fax (985) 758-1688

[www.mcdanielcontrols.com](http://www.mcdanielcontrols.com)

						
<b>Models:</b>	<b>K9</b>	<b>E9 &amp; G9</b>	<b>MPB/S</b>	<b>K</b>	<b>A, C, E, G</b>	<b>B, D, F, H</b>
<b>Dial Size:</b>	2½ inch (63mm)	4 inch (100mm)	4½ inch (130mm)	2½ inch (63mm)	4 inch (100mm)	6 inch (160mm)
<b>Case:</b>	304 Stainless Steel, Liquid Fillable	304 Stainless Steel, Liquid Fillable	Molded Fiberglass, PBTP Liquid Fillable Solid Front Blowout Back Standard	304 Stainless Steel, Liquid Fillable Solid Front Blowout Back Optional	304 Stainless Steel, Liquid Fillable (E & G) Solid Front Blowout Back Optional	304 Stainless Steel, Liquid Fillable (F & H) Solid Front Blowout Back Optional
<b>Ring:</b>	304 SS, Crimped (Polished on Back Connections Only)	304 SS, Crimped (Polished on Back Connections Only)	Molded Fiberglass, PBTP Removable	Bayonet Oversized, 304 SS, Removable, Polished	Bayonet Oversized, 304 SS, Removable, Polished	Bayonet Oversized, 304 SS, Removable, Polished
<b>Window:</b>	Polycarbonate	Polycarbonate	Laminated Safety Glass	Laminated Safety Glass	Laminated Safety Glass	Laminated Safety Glass
<b>Dial:</b>	White background, black pressure scale, red temperature scale	White background, black pressure scale, red temperature scale	White background, black pressure scale, red temperature scale	White background, black pressure scale, red temperature scale	White background, black pressure scale, red temperature scale	White background, black pressure scale, red temperature scale
<b>Pointer:</b>	Black Aluminum	Black Aluminum	Black Aluminum Micrometer adjustable	Black Aluminum	Black Aluminum Micrometer adjustable	Black Aluminum Micrometer adjustable
<b>Bourdon Tube:</b>	316 Stainless Steel	316 Stainless Steel	316 Stainless Steel	316 Stainless Steel	316 Stainless Steel	316 Stainless Steel
<b>Movement:</b>	304 Stainless Steel	304 Stainless Steel	304 Stainless Steel, Vacuum Stop and over range stop	304 Stainless Steel, Vacuum Stop and over range stop	304 Stainless Steel, Vacuum Stop and over range stop	304 Stainless Steel, Vacuum Stop and over range stop
<b>Socket:</b>	316 Stainless Steel	316 Stainless Steel	316 Stainless Steel	316 Stainless Steel	316 Stainless Steel	316 Stainless Steel
<b>Restrictor:</b>	0.7mm orifice (removable) 316 Stainless Steel	Optional	Optional	0.7mm orifice (removable) 316 Stainless Steel	Optional	Optional
<b>Connection:</b>	¼" npt standard ½" npt option (½)	¼" npt Model E9 ½" npt Model G9	¼" npt (MPB/SA) ½" npt (MPB/SC)	¼" npt standard ½" npt option (½)	¼" npt Models A & E ½" npt Models C & G	¼" npt Models B & F ½" npt Models D & H
<b>Service:</b>	Utility	Utility	Heavy Duty	Heavy Duty	Heavy Duty	Heavy Duty
<b>Accuracy:</b>	AMSE B40.1 Grade A 2-1-2%	AMSE B40.1 Grade A 2-1-2%	AMSE B40.1 Grade 2A ½% FS	AMSE B40.1 Grade 1A 1% FS	AMSE B40.1 Grade 2A ½% FS	AMSE B40.1 Grade 2A ½% FS
<b>Ranges:</b>	30" Hg vac. - 0-160 psi 30" Hg vac. - 0-300 psi with equivalent ammonia temperature scales	30" Hg vac. - 0-160 psi 30" Hg vac. - 0-300 psi with equivalent ammonia temperature scales	30" Hg vac. - 0-160 psi 30" Hg vac. - 0-300 psi with equivalent ammonia temperature scales	30" Hg vac. - 0-160 psi 30" Hg vac. - 0-300 psi with equivalent ammonia temperature scales	30" Hg vac. - 0-160 psi 30" Hg vac. - 0-300 psi with equivalent ammonia temperature scales	30" Hg vac. - 0-160 psi 30" Hg vac. - 0-300 psi with equivalent ammonia temperature scales

\* See website for dimensional data and downloadable AutoCAD files: [www.mcdanielcontrols.com](http://www.mcdanielcontrols.com)

**McDaniel also makes gauges in other materials; in sizes and ranges to fit a wide variety of applications, and in many special configurations.**

**Ask your representative about McDaniel gauges with brass or Monel® internals, all brass or all stainless steel gauges, test gauges, or other requirements.**

### Connection Code

**Bottom connected standard (no code)**  
**(L) = Lower-back connected - K9, K, A, C, E, G, B, D, F, H**  
**(C) = Center-back connected - E9 and G9, K(special order)**  
**(U) = Panel, U-Clamp mounted, Lower-back connected on K9, K, A, C, E, G, B, D, F, H Center-back on E9 and G9**  
**(P) = Panel, Front Flange, Lower-back connected on K9, K, A, C, E, G, B, D, F, H Center-back on E9 and G9**  
**(R) = Rear flange for Back or Bottom connections**

### HOW TO ORDER

- Select the **model number from above**
  - Specify **range code** - **YNH3** = 30"Hg - 0 - 160 psi or **ZNH3** = 30"Hg - 0 - 300 psi
  - Specify **connection code** (\*Not applicable on model MPB/S, **bottom mount only** available)
  - Specify **special configurations**:  
**S** = Solid Front Blow-out Back (optional on K, E, G, F, H), **1/8** = 1/8 inch npt (use on K & K9)
  - Add **choice of filling**, if appropriate. (**GF** = Glycerin Filled) (**SF** = Silicone Filled) (**FF** = Fluorolube Filled)
- Model #**  
(Example: **MPB/SAYNH3** - "MPB/S" = Model, "A" = (1/4" NPT), "Y" = (30-0-160psi), "NH3" = (Ammonia Dial)  
**K9ZNH3-GF** - "K9" = Model, "Z" = (30-0-300 psi), "NH3" = (Ammonia Dial), "GF" = (Glycerin Filled))

### Warranty

McDaniel warrants our pressure gauges to be free of defects in material and workmanship. Replacement of any defective gauge will be made at no cost to the purchaser. Gauge failures determined to be caused by abuse, over-range or incompatibility with environment or process media will not be considered under this warranty.

### Repair

We will repair any McDaniel gauge for a cost of \$15.00 on 4" and larger sizes; \$7.50 on 2 1/2" and smaller. Damaged sockets or bourdon tubes cannot be repaired. Prices are F.O.B. Boutte, Louisiana, U.S.A. (Not applicable to K9, E9, or G9)

### DISTRIBUTED BY:

It is recommended that users of pressure gauges become familiar with American National Standard ASME B40.1, entitled Gauges, Pressure and Vacuum - Indicating Dial Type - Elastic Element. This specification is available from:

**American Society of Mechanical Engineers**

3 Park Avenue • New York, New York 10016

Phone: 212-591-7722